

MISERIA E NOBILTÀ

ORNAMENTA.COM

CARDBOARD
TAILORMADE
60X120 //
60X60 //
GRES PORCELAIN //
RECTIFIED //

ORNAMENTA[®]

INFORMAL SURFACE

*waitings disillusioned
and unfulfilled dreams*

SUMMARY

COLOURS

pag. 4 | 5

THE COLLECTION

pag. 6 | 15

TECHNICAL INFO

pag. 17 | 21

CREDITS

pag. 22

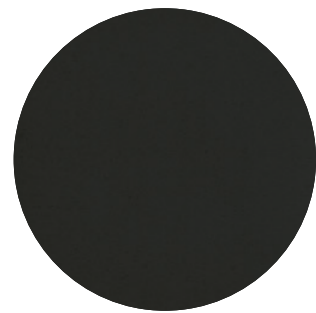
ORNAMENTA.COM



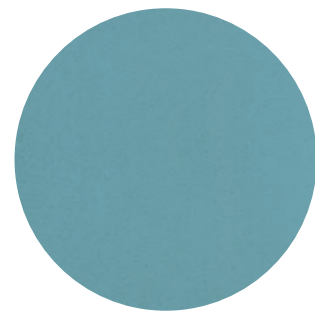
avana



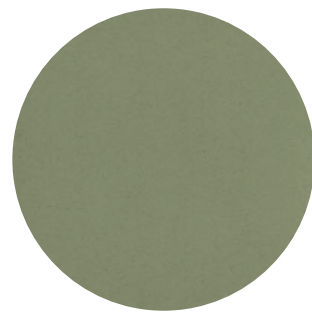
greggio



black



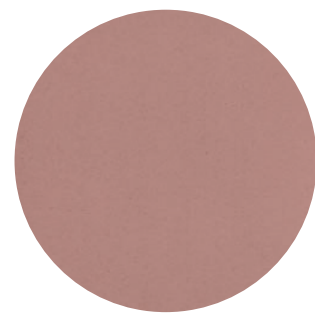
cerulean



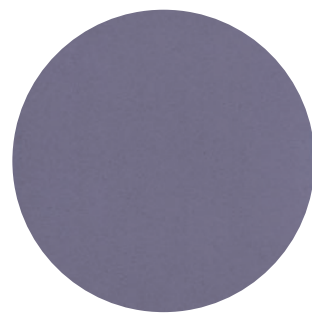
moss



white



strawberry



lavander



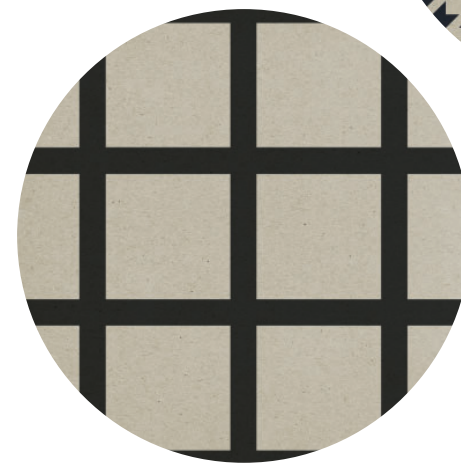
don gaetano



felice



eugenio



weaving



carving

*I colori e le caratteristiche estetiche dei materiali illustrati nel presente catalogo sono da ritenersi puramente indicativi.
Colours and aesthetical features of the materials as illustrated in this catalogue are to be regarded as mere indications.

Secondo capitolo della narrazione emotiva di Miseria e Nobiltà. Il semaforo verde è stato dato a due nuovi patterns declinati in 4 tinte pastello, disponibili anche come “tinte unite”, che si affiancano alle altre textures già presenti nel programma della collezione. Esplicita la mission di questo restyling: “i colori creando delle forme dalla forte attrattività contribuiscono a creare usi inaspettati del materiale”.

Second chapter of the emotional narration of Miseria e Nobiltà. The green light has been given to two new patterns declined in 4 pastel colors, also available as “solid colors”, which add to the other textures already present in the program of the collection. The mission of this restyling was clear: “colors, creating shapes with a strong attractiveness, contribute to create unexpected uses of the material.”

Avana Carving Cerulean

60x60 | 24”x24” - 60x120 | 24”x48”



Avana Eugenio Cerulean

60x60 | 24"x24"



Contemporary informal.

Un materiale solitamente impiegato per usi strumentali
diviene protagonista nella sua traslazione ceramica di superfici
contemporanee.

*A material normally used for instrumental uses becomes the protagonist in
its ceramic translation of contemporary surfaces.*

Avana Eugenio Lavander

60x120 | 24"x48"



Avana Don Gaetano Moss

60x120 | 24"x48"



Avana Weaving Moss

60x120 | 24"x48"



Greggio Weaving Cerulean

60x120 | 24"x48"



Greggio Felice Lavander

60x60 | 24"x24"



Greggio Carving Strawberry

60x120 | 24"x48"



Gres porcellanato rettificato ad impasto colorato disponibile in due colorazioni: AVANA e GREGGIO e due formati: 60x60 cm - 60x120 cm.
Più il programma decorato, declinato in 6 colori.

*Rectified Gres porcelain coloured in body available in two colours:
AVANA and GREGGIO and two sizes too: 60x60 cm | 24"x24" - 60x120 cm | 24"x48".
Plus the decorative program, available in 6 colors.*

Greggio Carving Moss

60x60 | 24"x24"



Greggio Carving Strawberry

60x120 | 24"x48"

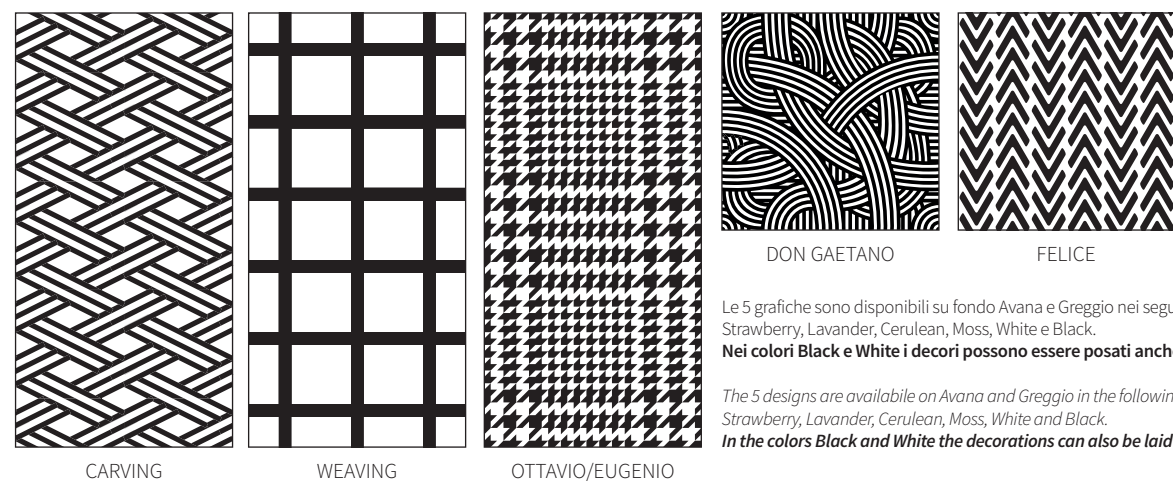


Greggio Carving White

60x120 | 24"x48"



TECHNICAL INFO



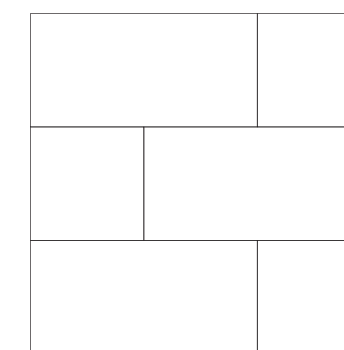
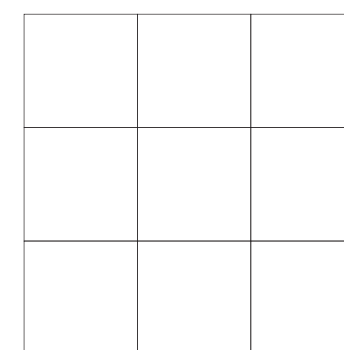
Le 5 grafiche sono disponibili su fondo Avana e Greggio nei seguenti 4 colori: Strawberry, Lavander, Cerulean, Moss, White e Black.
Nei colori Black e White i decori possono essere posati anche a pavimento.

The 5 designs are available on Avana and Greggio in the following 6 colours: Strawberry, Lavander, Cerulean, Moss, White and Black.
In the colors Black and White the decorations can also be laid on the floor.

COLOURS	strawberry	lavander	cerulean	moss	white	black
CODES ON AVANA	MEN60120AWS AVANA WEAVING STRAWBERRY 60x120 24"x48"	MEN60120AWL AVANA WEAVING LAVANDER 60x120 24"x48"	MEN60120AWC AVANA WEAVING CERULEAN 60x120 24"x48"	MEN60120AWM AVANA WEAVING MOSS 60x120 24"x48"	MEN60120AWW AVANA WEAVING WHITE 60x120 24"x48"	MEN60120AWB AVANA WEAVING BLACK 60x120 24"x48"
	MEN60120ACS AVANA CARVING STRAWBERRY 60x120 24"x48"	MEN60120ACL AVANA CARVING LAVANDER 60x120 24"x48"	MEN60120ACC AVANA CARVING CERULEAN 60x120 24"x48"	MEN60120ACM AVANA CARVING MOSS 60x120 24"x48"	MEN60120ACW AVANA CARVING WHITE 60x120 24"x48"	MEN60120ACB AVANA CARVING BLACK 60x120 24"x48"
	MEN60120AES AVANA EUGENIO STRAWBERRY 60x120 24"x48"	MEN60120AEL AVANA EUGENIO LAVANDER 60x120 24"x48"	MEN60120AEC AVANA EUGENIO CERULEAN 60x120 24"x48"	MEN60120AEM AVANA EUGENIO MOSS 60x120 24"x48"	MEN60120AO AVANA OTTAVIO 60x120 24"x48"	MEN60120AE AVANA EUGENIO 60x120 24"x48"
	MEN6060ADGS AVANA DON GAETANO STRAWBERRY 60x60 24"x24"	MEN6060ADGL AVANA DON GAETANO LAVANDER 60x60 24"x24"	MEN6060ADGC AVANA DON GAETANO CERULEAN 60x60 24"x24"	MEN6060ADGM AVANA DON GAETANO MOSS 60x60 24"x24"	MEN6060ADGW AVANA DON GAETANO WHITE 60x60 24"x24"	MEN6060ADG AVANA DON GAETANO BLACK 60x60 24"x24"
	MEN6060AFS AVANA FELICE STRAWBERRY 60x60 24"x24"	MEN6060AFL AVANA FELICE LAVANDER 60x60 24"x24"	MEN6060AFC AVANA FELICE CERULEAN 60x60 24"x24"	MEN6060AFM AVANA FELICE MOSS 60x60 24"x24"	MEN6060AF AVANA FELICE 60x60 24"x24"	MEN6060AFB AVANA FELICE BLACK 60x60 24"x24"

CODES ON GREGGIO	MEN60120GWS GREGGIO WEAVING STRAWBERRY 60x120 24"x48"	MEN60120GWL GREGGIO WEAVING LAVANDER 60x120 24"x48"	MEN60120GWC GREGGIO WEAVING CERULEAN 60x120 24"x48"	MEN60120GWM GREGGIO WEAVING MOSS 60x120 24"x48"	MEN60120GWW GREGGIO WEAVING WHITE 60x120 24"x48"	MEN60120GWB GREGGIO WEAVING BLACK 60x120 24"x48"
	MEN60120GCS GREGGIO CARVING STRAWBERRY 60x120 24"x48"	MEN60120GCL GREGGIO CARVING LAVANDER 60x120 24"x48"	MEN60120GCC GREGGIO CARVING CERULEAN 60x120 24"x48"	MEN60120GCM GREGGIO CARVING MOSS 60x120 24"x48"	MEN60120GCW GREGGIO CARVING WHITE 60x120 24"x48"	MEN60120GCB GREGGIO CARVING BLACK 60x120 24"x48"
	MEN60120GES GREGGIO EUGENIO STRAWBERRY 60x120 24"x48"	MEN60120GEL GREGGIO EUGENIO LAVANDER 60x120 24"x48"	MEN60120GEC GREGGIO EUGENIO CERULEAN 60x120 24"x48"	MEN60120GEM GREGGIO EUGENIO MOSS 60x120 24"x48"	MEN60120GO GREGGIO OTTAVIO 60x120 24"x48"	MEN60120GE GREGGIO EUGENIO 60x120 24"x48"
	MEN6060GDGS GREGGIO DON GAETANO STRAWBERRY 60x60 24"x24"	MEN6060GDGL GREGGIO DON GAETANO LAVANDER 60x60 24"x24"	MEN6060GDGC GREGGIO DON GAETANO CERULEAN 60x60 24"x24"	MEN6060GDGM GREGGIO DON GAETANO MOSS 60x60 24"x24"	MEN6060GDGW GREGGIO DON GAETANO WHITE 60x60 24"x24"	MEN6060GDG GREGGIO DON GAETANO BLACK 60x60 24"x24"
	MEN6060GFS GREGGIO FELICE STRAWBERRY 60x60 24"x24"	MEN6060GFL GREGGIO FELICE LAVANDER 60x60 24"x24"	MEN6060GFC GREGGIO FELICE CERULEAN 60x60 24"x24"	MEN6060GFM GREGGIO FELICE MOSS 60x60 24"x24"	MEN6060GFB GREGGIO FELICE BLACK 60x60 24"x24"	MEN6060GFB GREGGIO FELICE BLACK 60x60 24"x24"

SCHEMI DI POSA / LAYOUT SETTINGS



Si consiglia di posare il prodotto utilizzando un distanziale da 2mm.
 We suggest to lay the product by using a spacer of 2mm.

MISURE E PESI

weight and dimensions

poids et dimensions

größe und gewichte

medidas y pesos

Dimensione			
Size	60x60	60x120	
Format	24”x24”	24”x48”	
Format			
Tamaño			
Spessore			
Thickness		10 mm	
Épaisseur			
Stärke			
Espesor			
Peso			
Weight			
Poids	7,4 kg	16 kg	
Gewicht			
Peso			
Pezzi per scatola			
Pieces per carton			
Pièces par carton	3	2	
Stück pro Karton			
Unidades por caja			
Quantità per scatola			
Quantity per carton			
Quantité par carton	1,08 sqm	1,44 sqm	
Quantität pro Karton			
Cantidad por caja			
Peso per scatola			
Weight per carton			
Poids par carton	22,20 kg	32,00 kg	
Gewicht pro Karton			
Peso por caja			
Scatole per paletta			
Boxes per pallet			
Cartons par palette	32	20	
Karton pro palette			
Cajas por paleta			
Quantità per paletta			
Quantity per pallet			
Quantité par palette	34,56 sqm	28,80 sqm	
Quantität pro palette			
Cantidad por paleta			
Peso per paletta			
Weight per pallet			
Poids par palette	731 kg	670 kg	
Gewicht pro palette			
Peso por paleta			

Giunto		Stucchi		Grado di variazione cromatica	
Joint		Grouts	133 Sabbia-Sand	Colour shade variation	ASTM C137.1
Joint	2 mm	Joints	282 Grigio Bardiglio -	Degré de variation chromatique	V0 - V4
Fugenbreite		Fugenmassen	Bardiglio Grey	Grad Der Farbabweichung	V01
Junta		Pasta de rejuntar		Grado De Variación Cromatica	

Avvertenze

Non saranno accolte contestazioni per danni visibili prima della posa. I colori dei materiali illustrati nel presente catalogo sono da ritenersi puramente indicativi. I dati presenti nella tabella “Misure e Pesi” sono aggiornati al momento della stampa del catalogo, pertanto i dati elencati possono subire variazioni.

Advice

Claims on items which have already been laid will not be accepted for any damage visible before laying. Colours of the materials as illustrated in this catalogue are to be regarded as mere indications. The details present in the table “Weight and Dimensions” are updated at the time the catalogue is printed, therefore the datas may change.

Avertissements

Ils ne seront pas acceptées les réclamations pour dommages visibles avant l’installation. Les couleurs des matériaux illustrés dans ce catalogue sont purement indicatives. Les données dans le tableau «poids et mesures» est correcte au moment de l’impression du catalogue, pourquoi les données peuvent être modifiées.

Warnungen

Sie werden nicht vor der Installation akzeptiert Ansprüche auf sichtbare Beschädigungen werden. Die Farben der Materialien, die in diesem Katalog dargestellt sind rein indikativ. Die Daten in der Tabelle “Maße und Gewichte” ist korrekt zum Zeitpunkt der Druck des Katalogs, deshalb werden die aufgelisteten Daten geändert werden können.

Advertencias

No se aceptarán reclamaciones por daños visibles antes de la instalación. Los colores de los materiales descritos en este catálogo son meramente indicativos. Los datos de los “Pesos y Medidas” tabla es correcta en el momento de imprimir el catálogo, por lo tanto, los datos enumerados pueden ser alterados.

CARATTERISTICHE TECNICHE

technical features

caractéristiques techniques

technische eigenschaften

características técnicas

	NORMA STANDARD	VALORI LIMITI PREVISTI ESTABLISHED LIMITS VALEURS LIMITES PRÉVUES VORGESEHENE GRENZWERTE VALORES LIMITE PREVISTOS	VALORI RILEVATI MEASURED VALUES VALEURS MESUREES MESSWERTE VALOR MEDIDO
Lunghezza e larghezza Lenght and width Longueur et largeur Länge und Breite Longitud y anchura	ISO 10545.2	± 0,6%	± 0,6%
Rettilineità degli spigoli Straightness of sides Rectitude des arêtes Geradlinigkeit der Kanten Rectitud de los cantos	ISO 10545.2	± 0,5%	± 0,5%
Planarità Flatness Planéité Ebenflächigkeit Planeidad	ISO 10545.2	± 0,5%	± 0,5%
Assorbimento d’acqua Water absorption Absorption d’eau Wasseraufnahme Absorción de agua	ISO 10545.3 ASTM C373	≤ 0,5%	< 0,1%
Resistenza agli sbalzi termici Thermal shock Choc thermique Thermoschock Choque termal	ISO 10545.9 ASTM C484	Resistente Resistant Résistant Beständig Resistente	Resistente Resistant Résistant Beständig Resistente
Resistenza agli attacchi chimici Chemical resistance Résistance chimique Chemische Resistenz Resistencia química	ISO 10545.13 ASTM C650	Conforme Complies with the standards Conforme aux normes Anforderungenerf erfüllt Conforme con las normas	Conforme Complies with the standards Conforme aux normes Anforderungenerf erfüllt Conforme con las normas
Resistenza all’abrasione Deep resistance Résistance à l’abrasion Abriebfestigkeit Resistencia a la abrasión	ISO 10545.7 ASTM 1027	100 PEI 0 150 PEI I 600 PEI II 750 - 1500 PEI III 2100 - 6000 - 12000 PEI IV > 12000 PEI V	PEI IV Avana, Greggio, nei decori Black, White su fondo Avana e Greggio
Resistenza alle macchie Stains Resistance Résistance aux taches Fleckenbeständigkeit Resistencia a las manchas	ISO 10545.14 ASTM CC1378	≥ Classe 3 ≥ Class 3 ≥ Classe 3 ≥ Klasse 3 ≥ Categoria 3	Conforme Complies with the standards Conforme aux normes Anforderungenerf erfüllt Conforme con las normas
Resistenza allo scivolamento Antislip value Résistance au glissement Rutschhemmung Resistencia al deslizamiento	DIN 51130	da R9 a R13 from R9 to R13 de R9 à R13 von R9 bis R13 de R9 a R13	R9 Avana, Greggio, nei decori Black, White su fondo Avana e Greggio
	D-COF	> 0,42	≥ 0,42
Resistenza al gelo Frost resistant Résistant au gel Frostbeständig beständig Resistente a las heladas	ISO 10545.12 ASTM C1026	Conforme Complies with the standards Conforme aux normes Anforderungenerf erfüllt Conforme con las normas	Conforme Complies with the standards Conforme aux normes Anforderungenerf erfüllt Conforme con las normas
Resistenza alla rottura Breaking strenght Résistance à la rupture Biegezugfestigkeit Resistencia a flexión	ISO 10545.4	≥ 28 N/mm ²	Conforme Complies with the standards Conforme aux normes Anforderungenerf erfüllt Conforme con las normas

MISERIA E NOBILTÀ

CREDITS

EDITION

March 2019
© All rights reserved

ART DIRECTION

d-segno studio
di Davide Tonelli
d.tonelli@d-segno.com
linkedin.com/in/davidetonelli/

COMPANY

ORNAMENTA® Headquarter
Via Mosca, 1 - 41049
Sassuolo - (MO) Italia
T. +39 0536 867411
info@ornamenta.com

ORNAMENTA® Production unit
via Stradone Secchia 29,
42014 Roteglia - (RE) Italia
T. +39 0536 867411

COMMUNICATION & PR.

ORNAMENTA Press Office
press@ornamenta.com

ORNAMENTA.COM

ORNAMENTA®

A.D. Davide Tonelli

ORNAMENTA®
Via Mosca, 1 - 41049
Sassuolo - (MO) Italia
T. +39 0536 867411
F. +39 0536 803937
info@ornamenta.com
IT 00831670369
Gamma Due S.p.A.

ornamenta.com

@ornamentaceramics