

# MANUFATTO

ORNAMENTA.COM

BRICK  
PLAIN AND DIAMOND  
7,5X30 //  
WHITE BODY //  
GLOSSY //

**ORNAMENTA<sup>®</sup>**

**EXPLOSION OF COLORS**

*infinite layouts*

# SUMMARY

## COLOURS

pag. 4 | 5

## THE COLLECTION

pag. 6 | 19

## TECHNICAL INFO

pag. 21 | 25

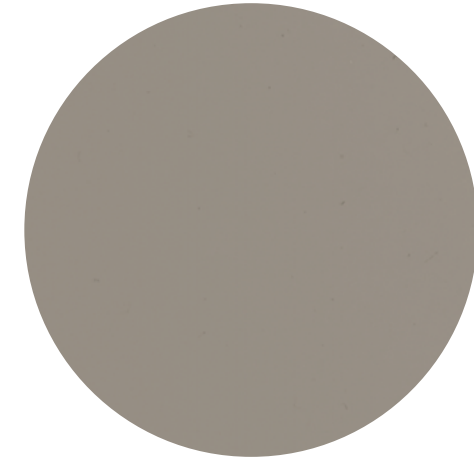
## CREDITS

pag. 26

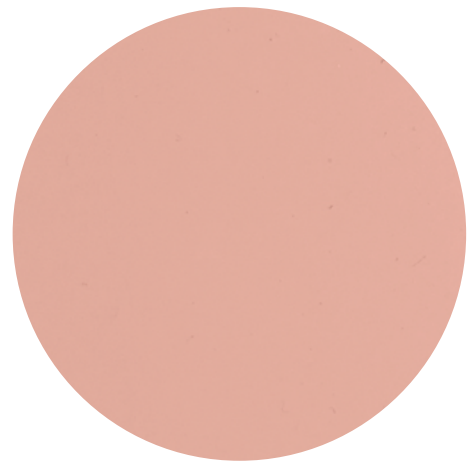
ORNAMENTA.COM



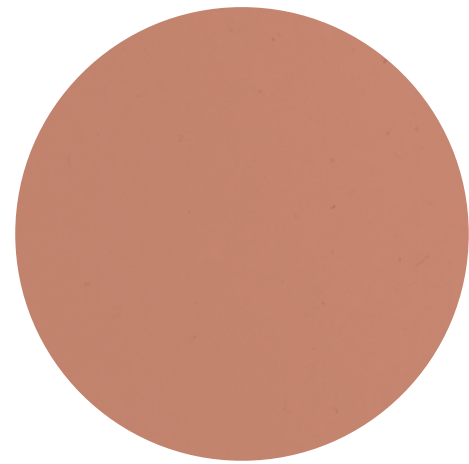
white



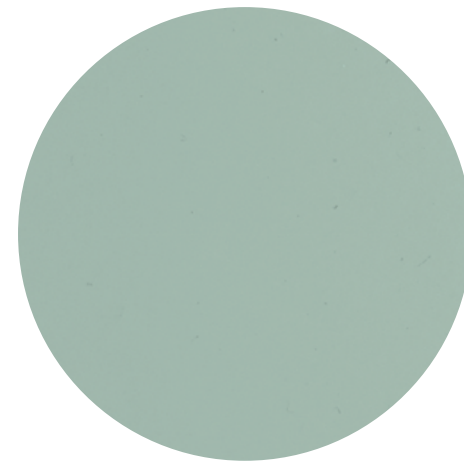
greige



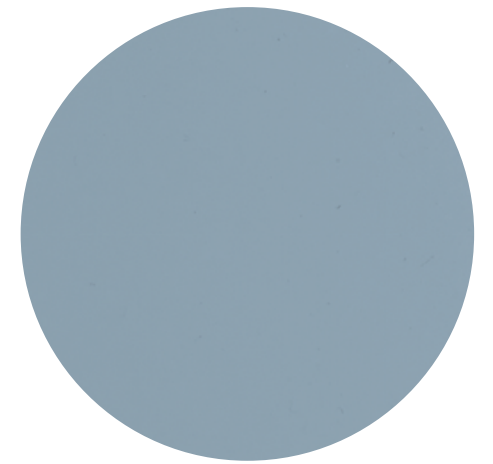
blush



terracotta



celadon



dusty blue

\*I colori e le caratteristiche estetiche dei materiali illustrati nel presente catalogo sono da ritenersi puramente indicativi.  
*Colours and aesthetical features of the materials as illustrated in this catalogue are to be regarded as mere indications.*

# White

PLAIN

7,5x30 | 3"x12"

Nasce dal bagaglio delle esperienze ceramiche passate di produzione artigianale e le fa proprie in un prodotto riproducibile su larga scala con una ripetizione sequenziale che non ne annulla l'antica forza ma la esalta. È piastrella fatta di materia e colore. Così Manufatto è una collezione che si compone di sei colori declinati in due forme, liscia e diamantata, per creare infinite possibilità compositive.

*Born from the baggage of the past ceramics experiences of artisanal production and makes them his own in a product reproducible on a large scale with a sequential repetition that does not cancel the ancient strength but exalts it. It is a tile made of material and color. So Manufatto is a collection that consists of six colors declined in two shapes, smooth and diamond-cut, to create infinite compositional possibilities.*



# White

DIAMOND

7,5x30 | 3"x12"



# Blush

PLAIN

7,5x30 | 3"x12"

Brick diamantato dalla finitura lucida per rivestimento.  
Sei colori pastello creano ambienti luminosi e contemporanei per  
soddisfare ogni esigenza progettuale.



*A diamond brick with a glossy finishing for wall.  
Six pastel colours create bright and contemporary set to meet  
any design requirement.*

# Blush

DIAMOND

7,5x30 | 3"x12"

# Terracotta

DIAMOND

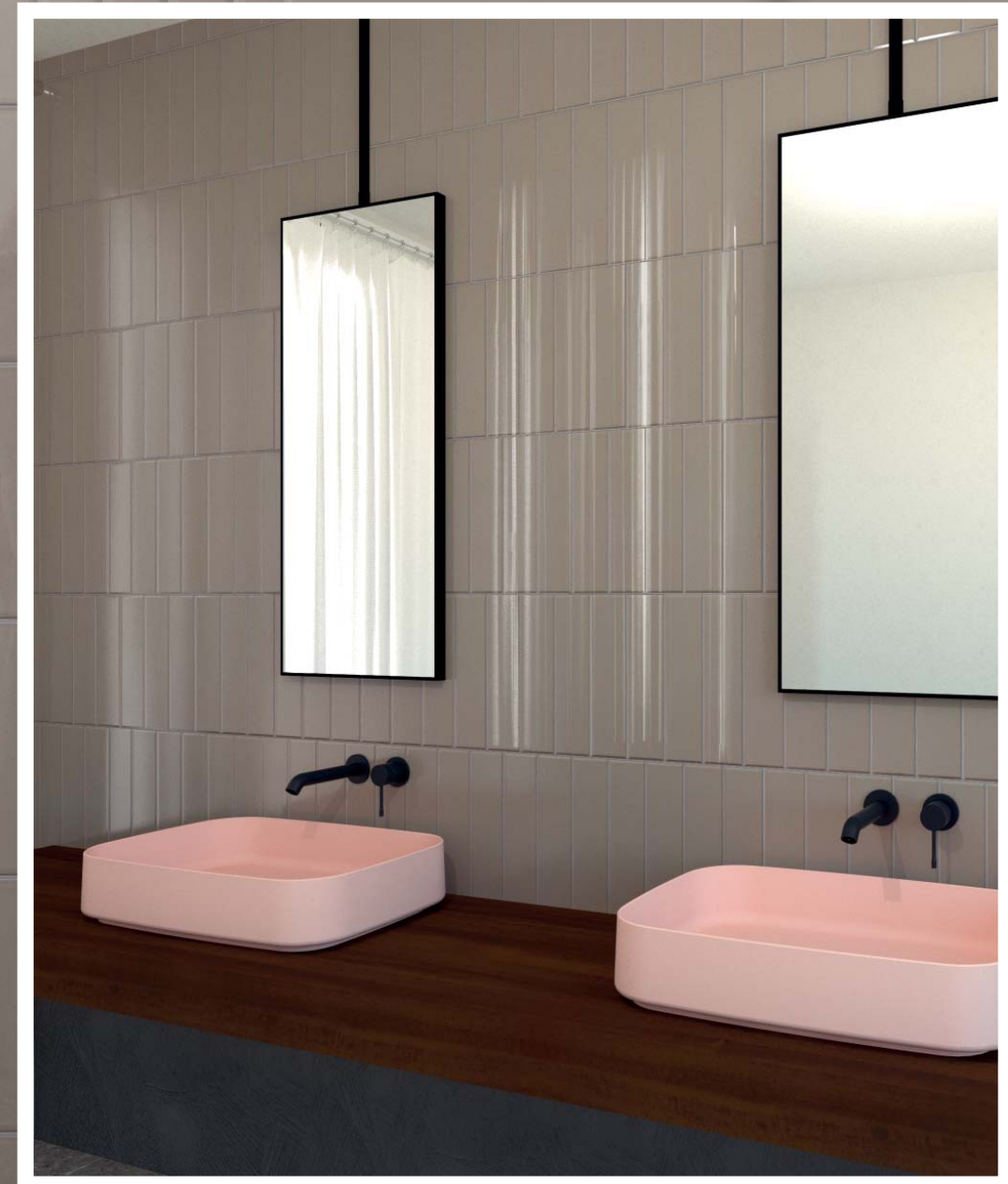
7,5x30 | 3"x12"



# Greige

DIAMOND & PLAIN

7,5x30 | 3"x12"

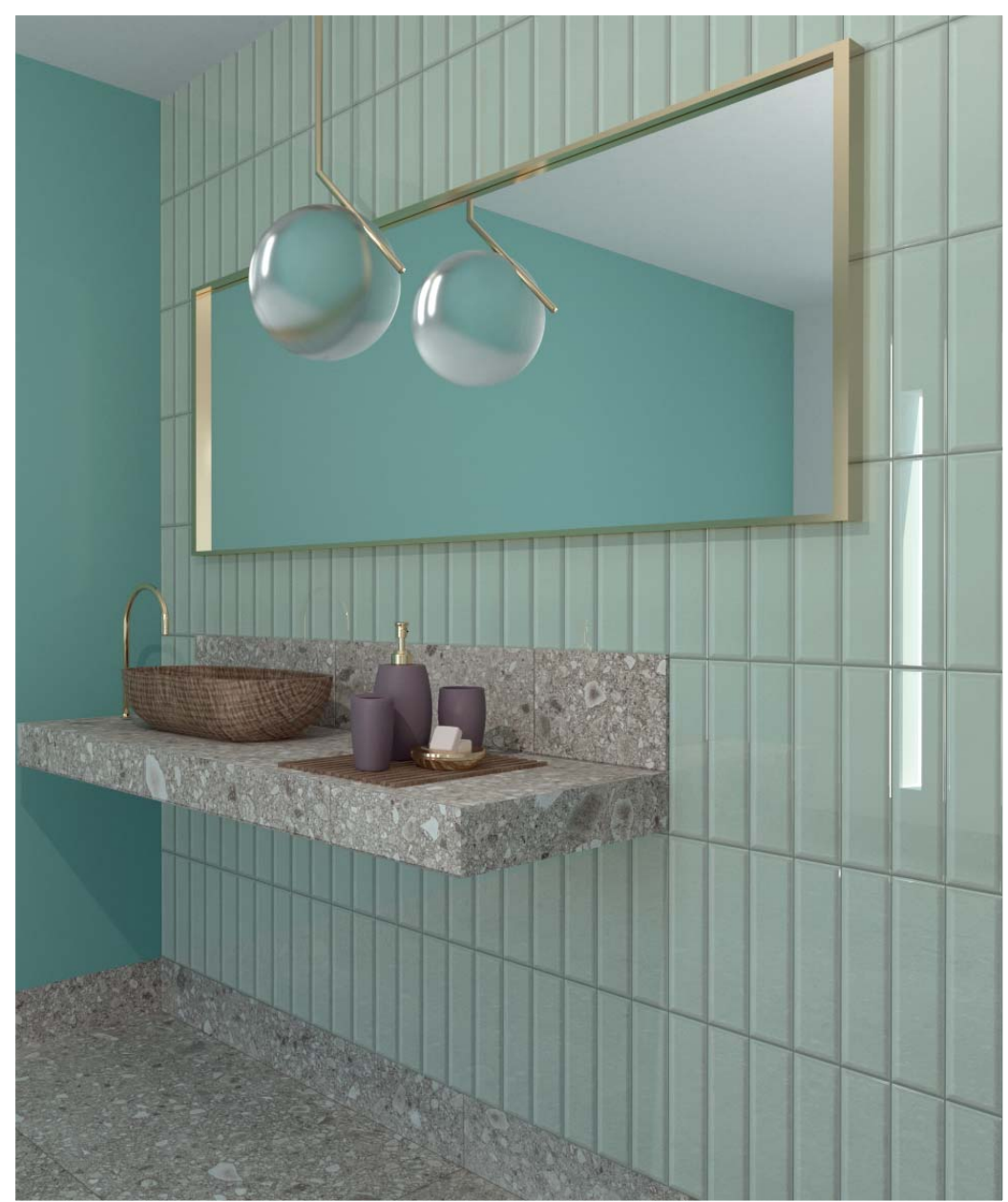




# Celadon

DIAMOND & PLAIN

7,5x30 | 3"x12"



# Dusty Blue

DIAMOND & PLAIN

7,5x30 | 3"x12"



# **TECHNICAL INFO**

**CODICI / CODES**



MAN730WL  
WHITE LISCIO  
7,5X30 | 3"X12"



MAN730BL  
BLUSH LISCIO  
7,5X30 | 3"X12"



MAN730TL  
TERRACOTTA LISCIO  
7,5X30 | 3"X12"



MAN730GL  
GREIGE LISCIO  
7,5X30 | 3"X12"



MAN730CL  
CELADON LISCIO  
7,5X30 | 3"X12"



MAN730DBL  
DUSTY BLUE LISCIO  
7,5X30 | 3"X12"



MAN730WD  
WHITE DIAMANTATO  
7,5X30 | 3"X12"



MAN730BD  
BLUSH DIAMANTATO  
7,5X30 | 3"X12"



MAN730TD  
TERRACOTTA DIAMANTATO  
7,5X30 | 3"X12"



MAN730GD  
GREIGE DIAMANTATO  
7,5X30 | 3"X12"

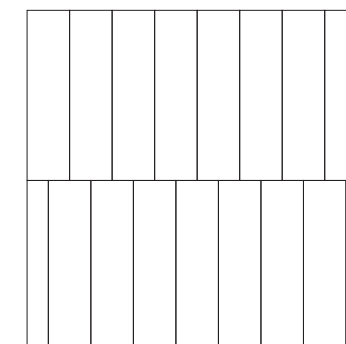
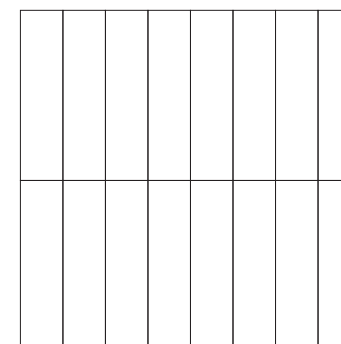


MAN730CD  
CELADON DIAMANTATO  
7,5X30 | 3"X12"



MAN730DBD  
DUSTY BLUE DIAMANTATO  
7,5X30 | 3"X12"

**SCHEMI DI POSA / LAYOUT SETTINGS**



Si consiglia di posare il prodotto utilizzando un distanziale da 2mm.  
We suggest to lay the product by using a spacer of 2mm.

## MISURE E PESI

weight and dimensions  
poids et dimensions  
größe und gewichte  
medidas y pesos

<b>Dimensione</b>			
Size	7,5x30	7,5x30	
Format	3”x12”	3”x12”	
Format	(liscio)	(diamantato)	
Tamaño			
<b>Spessore</b>			
Thickness			
Épaisseur	7 mm	7 mm	
Stärke			
Espesor			
<b>Peso</b>			
Weight			
Poids	0,32 kg	0,38 kg	
Gewicht			
Peso			
<b>Pezzi per scatola</b>			
Pieces per carton			
Pièces par carton	22	18	
Stück pro Karton			
Unidades por caja			
<b>Quantità per scatola</b>			
Quantity per carton			
Quantité par carton	0,495 sqm	0,405 sqm	
Quantität pro Karton			
Cantidad por caja			
<b>Peso per scatola</b>			
Weight per carton			
Poids par carton	7,137 kg	6,847kg	
Gewicht pro Karton			
Peso por caja			
<b>Scatole per paletta</b>			
Boxes per pallet			
Cartons par palette	132	132	
Karton pro palette			
Cajas por paleta			
<b>Quantità per paletta</b>			
Quantity per pallet			
Quantité par palette	65,34 sqm	53,46 sqm	
Quantität pro palette			
Cantidad por paleta			
<b>Peso per paletta</b>			
Weight per pallet			
Poids par palette	962 kg	923,8 kg	
Gewicht pro palette			
Peso por paleta			

<b>Giunto</b>		<b>Stucchi</b>	<b>103</b> Bianco Luna - Moon White	<b>Grado di variazione cromatica</b>	
Joint		Grouts	<b>141</b> Caramel -Caramel	Colour shade variation	ASTM C137.1
Joint	2 mm	Joints	<b>143</b> Terracotta	Degré de variation chromatique	V0 - V4
Fugenbreite		Fugenmassen	<b>136</b> Fango - Mud	Grad Der Farbabweichung	<b>V01</b>
Junta		Pasta de rejuntar	<b>182</b> Tormalina-Tourmaline	Grado De Variación Cromatica	
			<b>170</b> Celeste Crocus - Crocus Blue		

#### Avvertenze

Non saranno accolte contestazioni per danni visibili prima della posa. I colori dei materiali illustrati nel presente catalogo sono da ritenersi puramente indicativi. I dati presenti nella tabella “Misure e Pesi” sono aggiornati al momento della stampa del catalogo, pertanto i dati elencati possono subire variazioni.

#### Advice

Claims on items which have already been laid will not be accepted for any damage visible before laying. Colours of the materials as illustrated in this catalogue are to be regarded as mere indications. The details present in the table “Weight and Dimensions” are updated at the time the catalogue is printed, therefore the datas may change.

#### Avertissements

Ils ne seront pas acceptées les réclamations pour dommages visibles avant l’installation. Les couleurs des matériaux illustrés dans ce catalogue sont purement indicatives. Les données dans le tableau «poids et mesures» est correcte au moment de l’impression du catalogue, pourquoi les données peuvent être modifiées.

#### Warnungen

Sie werden nicht vor der Installation akzeptiert Ansprüche auf sichtbare Beschädigungen werden. Die Farben der Materialien, die in diesem Katalog dargestellt sind rein indikativ. Die Daten in der Tabelle “Maße und Gewichte” ist korrekt zum Zeitpunkt der Druck des Katalogs, deshalb werden die aufgelisteten Daten geändert werden können.

#### Advertencias

No se aceptarán reclamaciones por daños visibles antes de la instalación. Los colores de los materiales descritos en este catálogo son meramente indicativos. Los datos de los “Pesos y Medidas” tabla es correcta en el momento de imprimir el catálogo, por lo tanto, los datos enumerados pueden ser alterados.

## CARATTERISTICHE TECNICHE

technical features  
caractéristiques techniques  
technische eigenschaften  
características técnicas

	<b>NORMA STANDARD</b>	<b>VALORI LIMITI PREVISTI</b> ESTABLISHED LIMITS VALEURS LIMITES PRÉVUES VORGESEHENE GRENZWERTE VALORES LIMITE PREVISTOS	<b>VALORI RILEVATI</b> MEASURED VALUES VALEURS MESUREES MESSWERTE VALOR MEDIDO
<b>Lunghezza e larghezza</b> Lenght and width Longueur et largeur Länge und Breite Longitud y anchura	ISO 10545.2	± 0,6%	± 0,6%
<b>Rettilinearità degli spigoli</b> Straightness of sides Rectitude des arêtes Geradlinigkeit der Kanten Rectitud de los cantos	ISO 10545.2	± 0,5%	± 0,5%
<b>Planarità</b> Flatness Planéité Ebenflächigkeit Planeidad	ISO 10545.2	± 0,5%	± 0,5%
<b>Assorbimento d’acqua</b> Water absorption Absorption d’eau Wasseraufnahme Absorción de agua	ISO 10545.3 ASTM C373	> 10%	> 10%
<b>Resistenza agli sbalzi termici</b> Thermal shock Choc thermique Thermoschock Choque termal	ISO 10545.9 ASTM C484	<b>Resistente</b> Resistant Résistant Beständig Resistente	<b>Resistente</b> Resistant Résistant Beständig Resistente
<b>Resistenza agli attacchi chimici</b> Chemical resistance Résistance chimique Chemische Resistenz Resistencia química	ISO 10545.13 ASTM C650	<b>Conforme</b> Complies with the standards Conforme aux normes Anforderungenerf erfüllt Conforme con las normas	<b>Conforme</b> Complies with the standards Conforme aux normes Anforderungenerf erfüllt Conforme con las normas
<b>Resistenza alle macchie</b> Stains Resistance Résistance aux taches Fleckenbeständigkeit Resistencia a las manchas	ISO 10545.14 ASTM CC1378	<b>≥ Classe 3</b> ≥ Class 3 ≥ Classe 3 ≥ Klasse 3 ≥ Categoria 3	<b>Classe 5</b> Class 5 Classe 5 Klasse 5 Categoria 5
<b>Resistenza al gelo</b> Frost resistant Résistant au gel Frostbeständig Resistente a las heladas	ISO 10545.12 ASTM C1026	<b>Conforme</b> Complies with the standards Conforme aux normes Anforderungenerf erfüllt Conforme con las normas	<b>Conforme</b> Complies with the standards Conforme aux normes Anforderungenerf erfüllt Conforme con las normas
<b>Resistenza alla rottura</b> Breaking strenght Résistance à la rupture Biegezugfestigkeit Resistencia a flexión	ISO 10545.4	≥ 28 N/mm <sup>2</sup>	<b>Conforme</b> Complies with the standards Conforme aux normes Anforderungenerf erfüllt Conforme con las normas

# CREDITS

## EDITION

July 2018  
© All rights reserved

## ART DIRECTION

**d-segno studio**  
di Davide Tonelli  
d.tonelli@d-segno.com  
linkedin.com/in/davidetonelli/

## COMPANY

ORNAMENTA® Headquarter  
Via Mosca, 1 - 41049  
Sassuolo - (MO) Italia  
T. +39 0536 867411  
info@ornamenta.com

ORNAMENTA® Production unit  
via Stradone Secchia 29,  
42014 Roteglia - (RE) Italia  
T. +39 0536 867411

## COMMUNICATION & PR.

ORNAMENTA Press Office  
press@ornamenta.com

**ORNAMENTA.COM**

# ORNAMENTA®

A.D. Davide Tonelli

## Art direction

d-segno studio  
di Davide Tonelli  
d.tonelli@d-segno.com  
linkedin.com/in/davidetonelli/

## Company

ORNAMENTA® Headquarter  
Via Mosca, 1 - 41049  
Sassuolo - (MO) Italia  
T. +39 0536 867411  
F. +39 0536 803937  
info@ornamenta.com  
IT 00831670369  
Gamma Due S.p.A.

ORNAMENTA® Production unit  
via Stradone Secchia 29,  
42014 Roteglia - (RE) Italia  
T. +39 0536 867411

## Communication & Pr.

ORNAMENTA Press Office  
press@ornamenta.com

[ornamenta.com](http://ornamenta.com)

@ornamentaceramics