

CLASSIC

ORNAMENTA.COM

CEMENTINE EVERGREEN
60X60 - 15X60 //
30X30 - 15X15 //
GRES PORCELAIN //
RECTIFIED //

ORNAMENTA[®]

DECORATION MULTIFORMAT

reinventing, tradition

SUMMARY

COLOURS

pag. 4 | 5

THE COLLECTION

pag. 6 | 7

RED

pag. 8 | 9

GREY

pag. 10 | 19

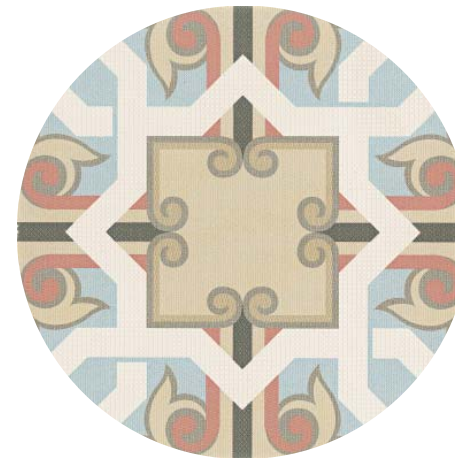
TECHNICAL INFO

pag. 21 | 25

CREDITS

pag. 26

ORNAMENTA.COM



red



grey

INTO TRADITION

FOCUS ON THE PROJECT

Colori intensi e grafismi di rimando alle cementine di fine 800 si uniscono in accostamenti di formati inediti, dando vita ad uno stile sofisticato e senza compromessi, icona di un gusto italiano che si rinnova nell'equilibrio tra classico e contemporaneo.

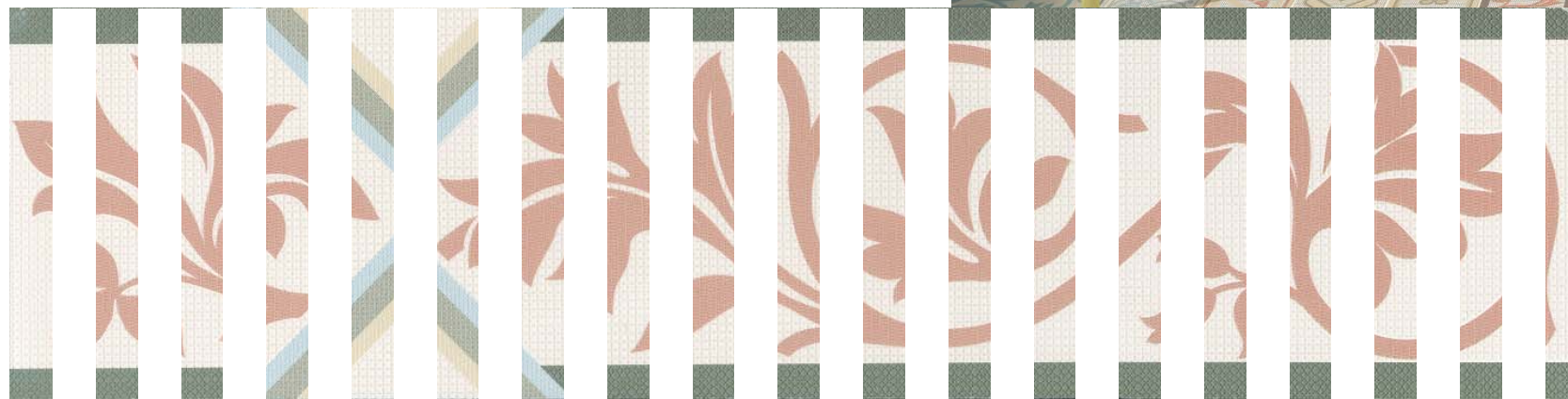
+ plus valore tecnico con decorazioni digitali HD su gres porcellanato e serigrafie di vetrosa per coniugare matericità e resistenza al tempo stesso in queste "cementine", in cui la novità è rappresentata dall'utilizzo del "multiformato" e da una reinterpretazione attualizzata dei grafismi tipici dell'epoca.

Red



REINVENTING TRADITION

Intense colours and graphics revoking the cementine of late XIX century join together into combinations of innovative sizes, giving life to a sophisticated style with no compromises, icon of an Italian taste which reinvents itself in the equilibrium between classic and contemporary.
+ plus technic value with digital HD decorations on gres porcelain and glazed printings to combine matter and high resistance at the same time in these "cementine" in which "the new" is represented by the use of "multiformat" and by an actualized reinterpretation of typical designs of the past.



Classic

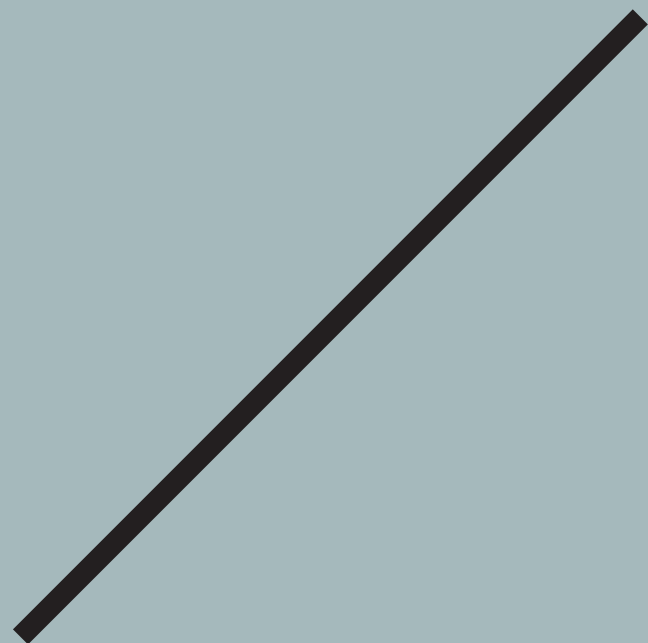


I'D LIKE
TO SHOW YOU
SOMETHING
I DID...

Grey

HOPE YOU
LIKE IT.

Tra
di



multiformat

tion

Scegli tra differenti schemi di posa privilegiando il modulo che ti interessa.
Choose between different layout schemes privileging your favourite module.

one size

Se invece vuoi privilegiare una posa più semplice hai la possibilità di scegliere anche solo un formato tra i codici presente nel programma delle due famiglie colore.

If you want to favor a simpler installation you can also choose only one size between codes in the two color families program.



“
**Welcome
back
home.**
”



*Because a classic never
finished saying what it has to
say.*



“
I always had
a fantasy of
being a designer
because I like
design.
”



30x30

Feel the
inspiration

#CLASSIC

TECHNICAL INFO



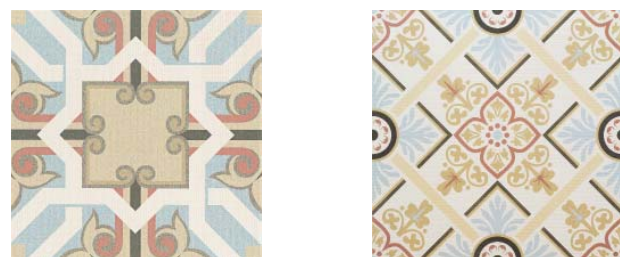
CL1515AM
CLASSIC 15x15 | 6"x6" mix 8



CL3030AM
CLASSIC 30x30 | 12"x12" mix 4



CL1560AM
CLASSIC 15x60 | 6"x12" mix 4



CL6060AM
CLASSIC
60x60 | 24"x24"

CL6060BM
CLASSIC
60x60 | 24"x24"



CL1515GM
CLASSIC GREY 15x15 | 6"x6" mix 8



CL3030GM
CLASSIC GREY 30x30 | 12"x12" mix 4



CL1560GM
CLASSIC GREY 15x60 | 6"x12" mix 4



CL6060GM
CLASSIC GREY
60x60 | 24"x24"

CL6060GBM
CLASSIC GREY
60x60 | 24"x24"

INSTALLATION PATTERNS



60x60 | 33,3 %
15x60 | 16,7 %
30x30 | 30,6 %
15x15 | 19,4 %

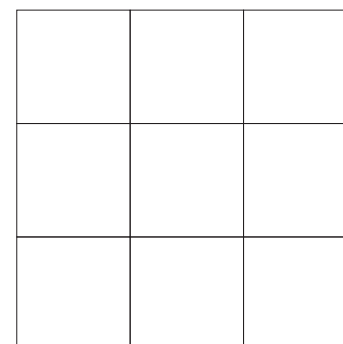


15x60 | 50 %
30x30 | 50 %

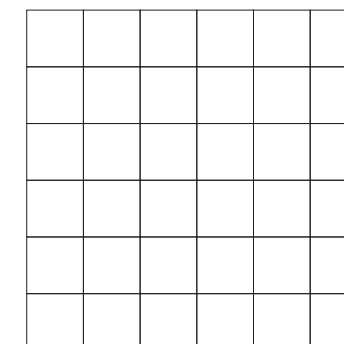


15x60 | 25 %
30x30 | 50 %
15x15 | 25 %

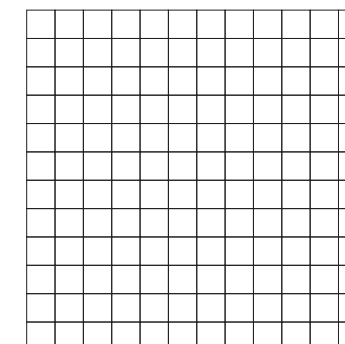
SCHEMI DI POSA / LAYOUT SETTINGS



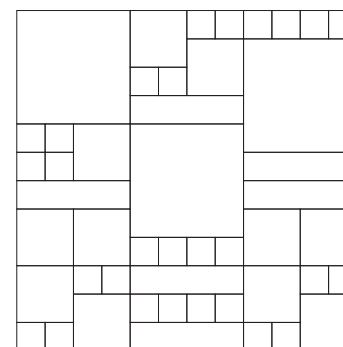
60x60



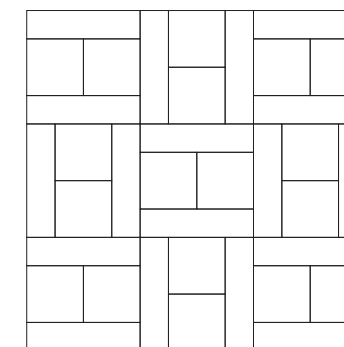
30x30



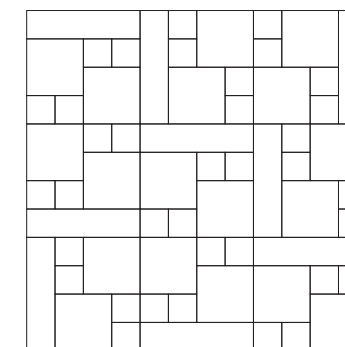
15x15



60x60, 30x30, 15x60, 15x15



30x30, 15x15



30x30, 15x60, 15x15

Si consiglia di posare il prodotto utilizzando un distanziale da 2mm.
We suggest to lay the product by using a spacer of 2mm.

MISURE E PESI

weight and dimensions

poids et dimensions

größe und gewichte

medidas y pesos

Dimensione				
Size	60x60	30x30	15x60	15x15
Format	24”x24”	12”x12”	6”x24”	6”x6”
Format				
Tamaño				
Spessore				
Thickness				
Épaisseur		10 mm		
Stärke				
Espesor				
Peso				
Weight				
Poids	7,4 kg	1,85 kg	1,85 kg	0,5 kg
Gewicht				
Peso				
Pezzi per scatola				
Pieces per carton				
Pièces par carton	3	12	12	32
Stück pro Karton				
Unidades por caja				
Quantità per scatola				
Quantity per carton				
Quantité par carton	1,08 sqm	1,08 sqm	1,08 sqm	0,72 sqm
Quantität pro Karton				
Cantidad por caja				
Peso per scatola				
Weight per carton				
Poids par carton	22,20 kg	22,20 kg	22,20 kg	16,00 kg
Gewicht pro Karton				
Peso por caja				
Scatole per paletta				
Boxes per pallet				
Cartons par palette	32	36	40	56
Karton pro palette				
Cajas por paleta				
Quantità per paletta				
Quantity per pallet				
Quantité par palette	34,56 sqm	38,88 sqm	43,20 sqm	40,32 sqm
Quantität pro palette				
Cantidad por paleta				
Peso per paletta				
Weight per pallet				
Poids par palette	731 kg	820 kg	909 kg	917 kg
Gewicht pro palette				
Peso por paleta				
Giunto				
Joint				
Joint	2 mm			
Fugenbreite				
Junta				
Stucchi				
Grouts				
Joints		111 Grigio Argento		
Fugenmassen		Silver Grey		
Pasta de rejuntar				
Grado di variazione cromatica				
Colour shade variation				ASTM C137.1
Degré de variation chromatique				V0 - V4
Grad Der Farbabweichung				V01
Grado De Variación Cromatica				

Avvertenze

Non saranno accolte contestazioni per danni visibili prima della posa. I colori dei materiali illustrati nel presente catalogo sono da ritenersi puramente indicativi. I dati presenti nella tabella "Misure e Pesi" sono aggiornati al momento della stampa del catalogo, pertanto i dati elencati possono subire variazioni.

Advice

Claims on items which have already been laid will not be accepted for any damage visible before laying. Colours of the materials as illustrated in this catalogue are to be regarded as mere indications. The details present in the table "Weight and Dimensions" are updated at the time the catalogue is printed, therefore the datas may change.

Avertissements

Ils ne seront pas acceptées les réclamations pour dommages visibles avant l'installation. Les couleurs des matériaux illustrés dans ce catalogue sont purement indicatives. Les données dans le tableau «poids et mesures» est correcte au moment de l'impression du catalogue, pourquoi les données peuvent être modifiées.

Warnungen

Sie werden nicht vor der Installation akzeptiert Ansprüche auf sichtbare Beschädigungen werden. Die Farben der Materialien, die in diesem Katalog dargestellt sind rein indikativ. Die Daten in der Tabelle "Maße und Gewichte" ist korrekt zum Zeitpunkt der Druck des Katalogs, deshalb werden die aufgelisteten Daten geändert werden können.

Advertencias

No se aceptarán reclamaciones por daños visibles antes de la instalación. Los colores de los materiales descritos en este catálogo son meramente indicativos. Los datos de los "Pesos y Medidas" tabla es correcta en el momento de imprimir el catálogo, por lo tanto, los datos enumerados pueden ser alterados.

CARATTERISTICHE TECNICHE

technical features

caractéristiques techniques

technische eigenschaften

características técnicas

	NORMA STANDARD	VALORI LIMITI PREVISTI ESTABLISHED LIMITS VALEURS LIMITES PRÉVUES VORGESEHENE GRENZWERTE VALORES LIMITE PREVISTOS	VALORI RILEVATI MEASURED VALUES VALEURS MESUREES MESSWERTE VALOR MEDIDO
Lunghezza e larghezza			
Lenght and width Longueur et largeur Länge und Breite Longitud y anchura	ISO 10545.2	± 0,6%	± 0,6%
Rettilineità degli spigoli			
Straightness of sides Rectitude des arêtes Geradlinigkeit der Kanten Rectitud de los cantos	ISO 10545.2	± 0,5%	± 0,5%
Planarità			
Flatness Planéité Ebenflächigkeit Planeidad	ISO 10545.2	± 0,5%	± 0,5%
Assorbimento d'acqua			
Water absorption Absorption d'eau Wasseraufnahme Absorción de agua	ISO 10545.3 ASTM C373	≤ 0,5%	≤ 0,5%
Resistenza agli sbalzi termici			
Thermal shock Choc thermique Thermoschock Choque termal	ISO 10545.9 ASTM C484	Resistente Resistant Résistant Beständig Resistente	Resistente Resistant Résistant Beständig Resistente
Resistenza agli attacchi chimici			
Chemical resistance Résistance chimique Chemische Resistenz Resistencia química	ISO 10545.13 ASTM C650	Conforme Complies with the standards Conforme aux normes Anforderungenerf erfüllt Conforme con las normas	Conforme Complies with the standards Conforme aux normes Anforderungenerf erfüllt Conforme con las normas
Resistenza all'abrasione			
Deep resistance Résistance à l'abrasion Abriebfestigkeit Resistencia a la abrasión	ISO 10545.7 ASTM 1027	100 PEI 0 150 PEI I 600 PEI II 750 - 1500 PEI III 2100 - 6000 - 12000 PEI IV > 12000 PEI V	PEI IV
Resistenza alle macchie			
Stains Resistance Résistance aux taches Fleckenbeständigkeit Resistencia a las manchas	ISO 10545.14 ASTM CC1378	≥ Classe 3 ≥ Class 3 ≥ Classe 3 ≥ Klasse 3 ≥ Categoria 3	Classe 5 Class 5 Classe 5 Klasse 5 Categoria 5
Resistenza allo scivolamento			
Antislip value Résistance au glissement Rutschhemmung Resistencia al deslizamiento	DIN 51130	da R9 a R13 from R9 to R13 de R9 à R13 von R9 bis R13 de R9 a R13	R10
	D-COF	> 0,42	≥ 0,42
Resistenza al gelo			
Frost resistant Résistant au gel Frostbeständig Resistente a las heladas	ISO 10545.12 ASTM C1026	Conforme Complies with the standards Conforme aux normes Anforderungenerf erfüllt Conforme con las normas	Conforme Complies with the standards Conforme aux normes Anforderungenerf erfüllt Conforme con las normas
Resistenza alla rottura			
Breaking strenght Résistance à la rupture Biegezugfestigkeit Resistencia a flexión	ISO 10545.4	≥ 28 N/mm ²	Conforme Complies with the standards Conforme aux normes Anforderungenerf erfüllt Conforme con las normas

CREDITS

EDITION

October 2017
© All rights reserved

ART DIRECTION

Davide Tonelli
info@davidetonelli.it
linkedin.com/in/davidetonelli/

COMPANY

ORNAMENTA® Headquarter
Via Mosca, 1 - 41049
Sassuolo - (MO) Italia
T. +39 0536 867411
info@ornamenta.com

ORNAMENTA® Production unit
via Stradone Secchia 29,
42014 Roteglia - (RE) Italia
T. +39 0536 867411

COMMUNICATION & PR.

ORNAMENTA Press Office
press@ornamenta.com

ORNAMENTA.COM

ORNAMENTA®

A.D. Davide Tonelli

ORNAMENTA®
Via Mosca, 1 - 41049
Sassuolo - (MO) Italia
T. +39 0536 867411
F. +39 0536 803937
info@ornamenta.com
IT 00831670369
Gamma Due S.p.A.

ornamenta.com

@ornamentaceramics